



Non Contact Thermometer Calibrator

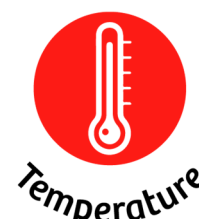
(+ 30 °C ...+ 130 °C)

Model:

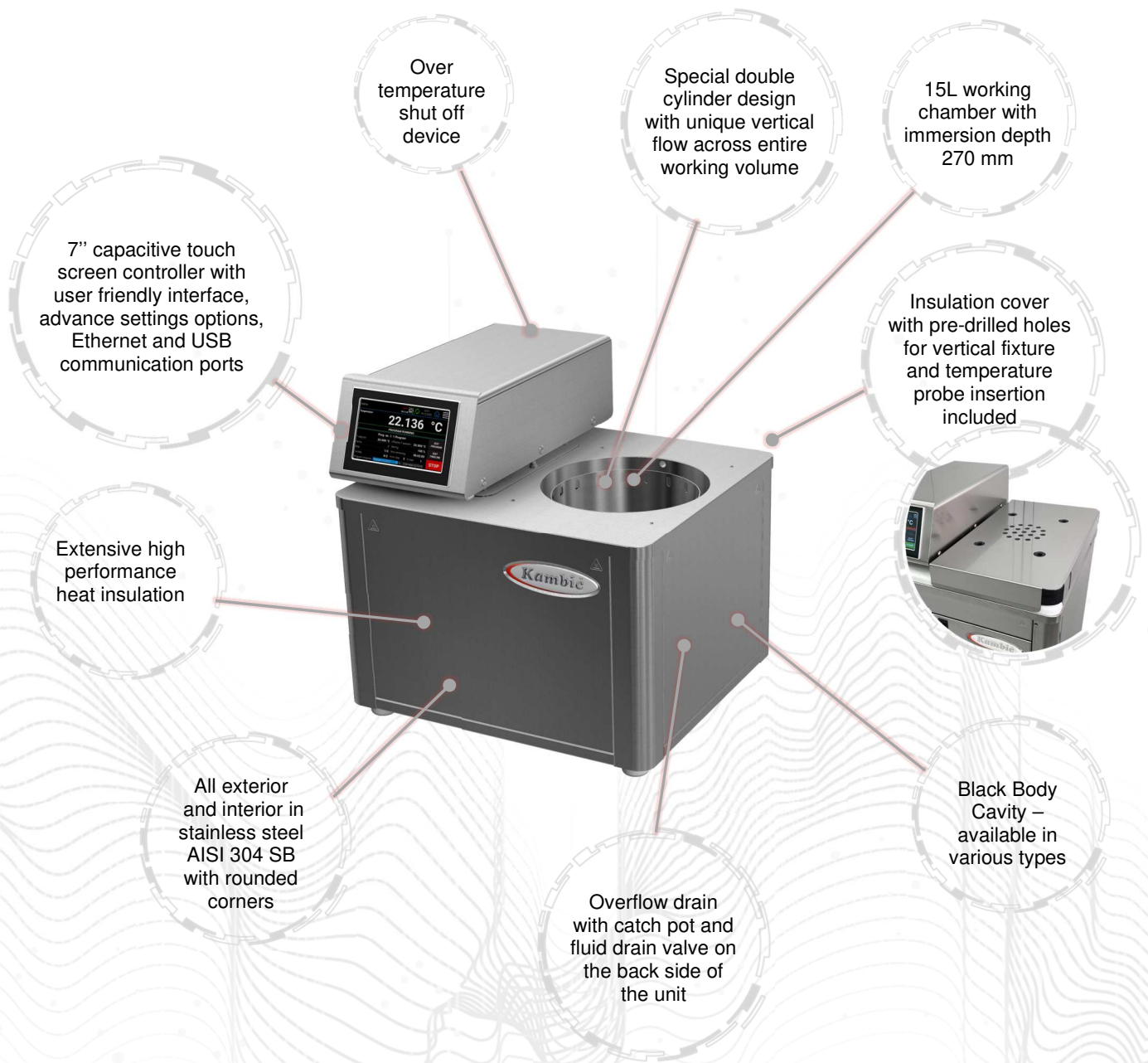
OB-15/2 BBC

Special calibration baths - metrology performance:

- Blackbody cavity with emissivity higher than 0.99 in a calibration fluid bath
 - Ready-to-fit reference PRT or SPRT for monitoring fluid stability
 - Various standard and tailored blackbody cavity shapes available
 - Metrological uniformity and stability in mK range
 - Ready to run in benchtop design



Device description:



Black-body cavity options:



BB - EXERGEN



BB-CN



BB - CN+EXERGEN



BB - ASTM

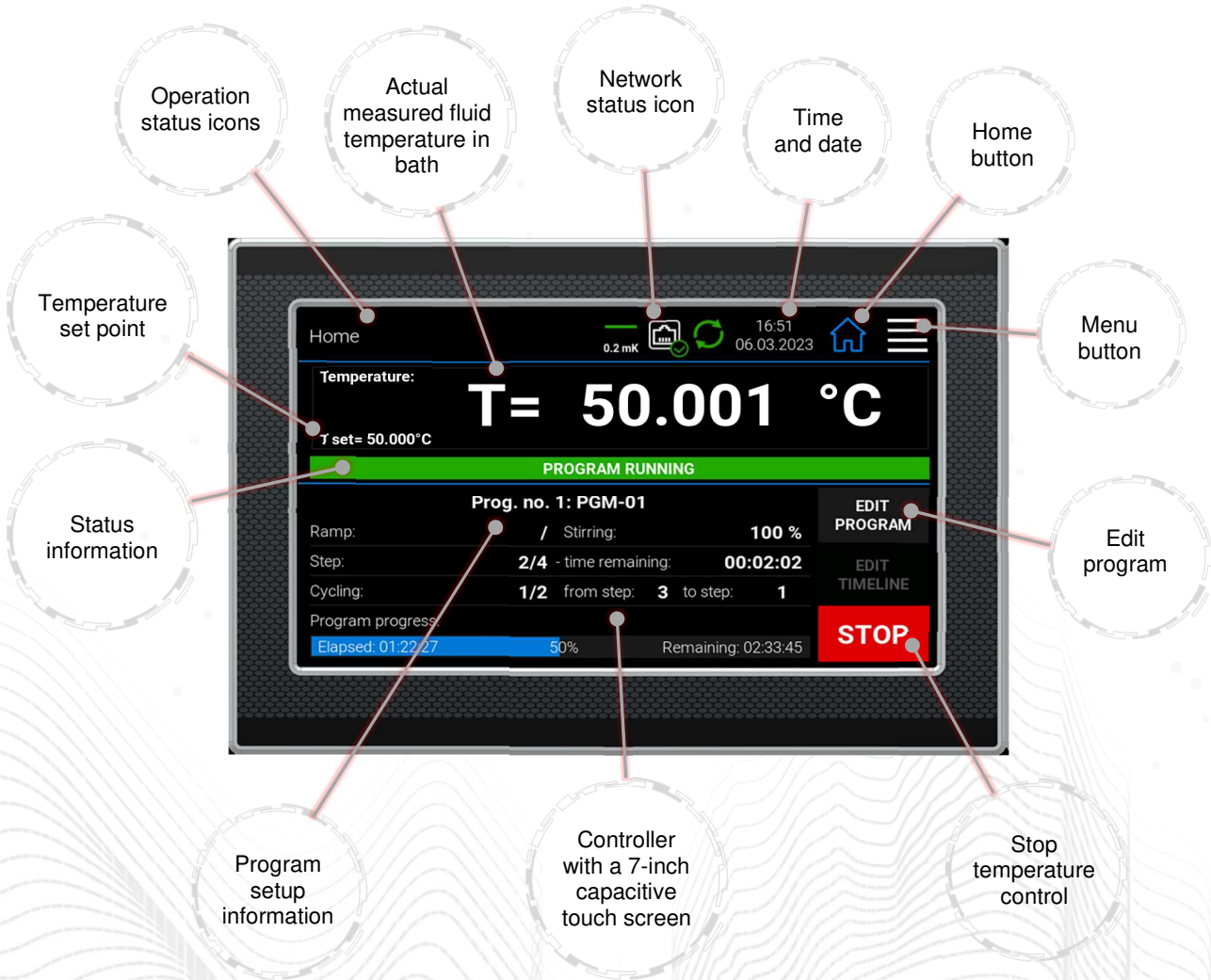


BB - JIS T

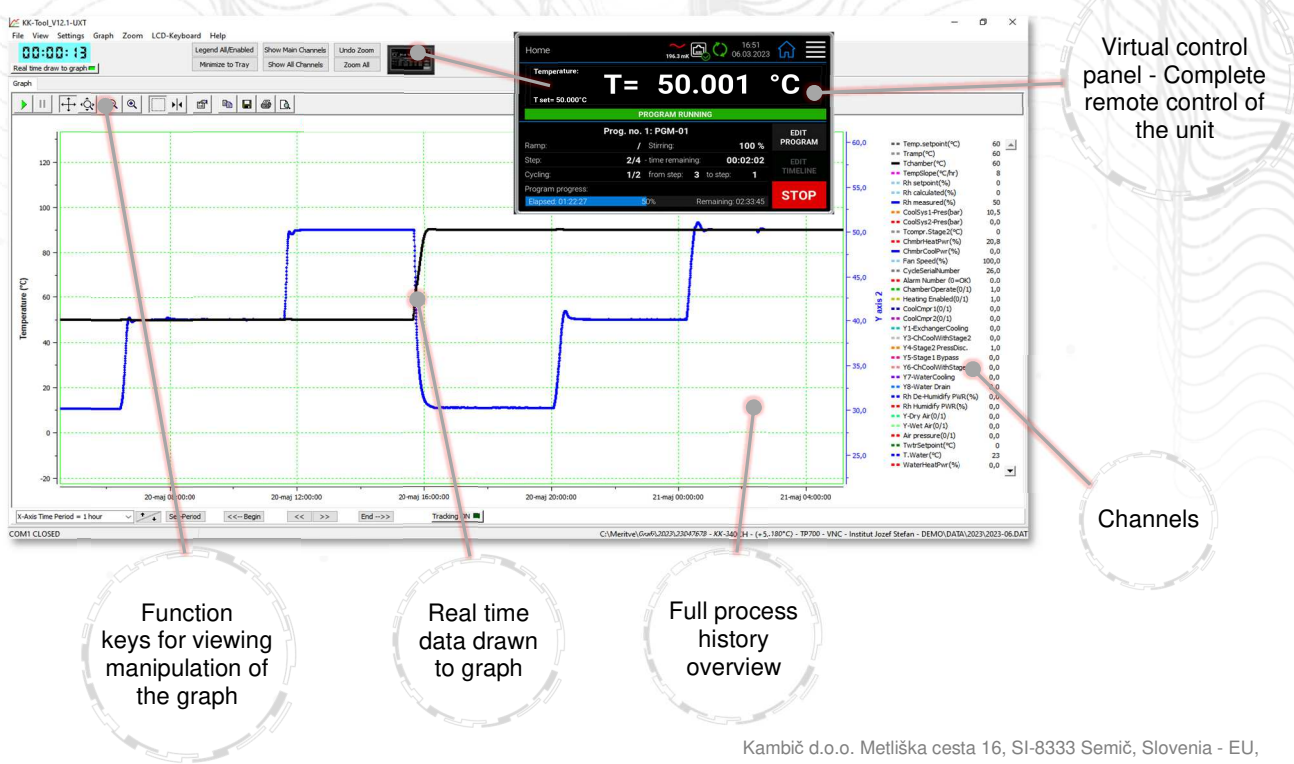


BB - EN


Touch display with advanced controller functions:



OB-Tool software for PC (free – included with every unit):



Technical data:

| | OB-15/2 |
|---|--|
| |  |
| External dimensions (WxHxD) [mm] | 534 x 545 x 474 |
| Internal dimensions (diameter x immersion depth) [mm] | Ø 225 x 270 |
| Volume [L] | ~ 15 |
| Fluid quantity for operation [L] | 20 |
| Temperature range [°C] | + 30 °C ...+ 130 °C <i>*(0 °C ... 130 °C when connected to a circulating cooler)</i> |
| Temperature display resolution [°C] | 0.001 |
| Temperature set resolution [°C] | 0.001 |
| Temperature stability [°C] | ± 0.002 @ 30 °C ± 0.002 @ 37 °C ± 0.002 @ 50 °C ± 0.003 @ 70 °C ± 0.003 @ 100 °C |
| Temperature uniformity [°C] | ± 0.007 |
| Heating rate | ~ 1 hour (+ 40 °C ...+ 100 °C) |
| Cooling rate | N/A (natural cooling) |
| Temperature Control | PID |
| Noise level [dBA] | < 48 |
| Cooling | Natural cooling <i>*(Ready for connection to a circulating cooler)</i> |
| Power supply | 230 V 50/60 HZ (± 10 %) |
| Wattage [W] | 1100 |
| Interface | Ethernet, USB |
| Overflow catch pot | Included |
| Weight [kg] | ~ 41 |

**All performance in controlled environment (Tambient = 22 °C ± 3 °C)!*

**Accessories might affect performance!*

**OB-15/2 BB performance data with fluid KDC 200.50*

**All the specifications are related to the bath and the fluid (not to the Black Body Cavity)*

Accessories:

- LIG thermometer holder



- Vertical fixture



- Adjustable multiple probe fixture



- External fluid level for LIG



- Additional lid



- Removable shelf



- Fume hood



- Evaluation report

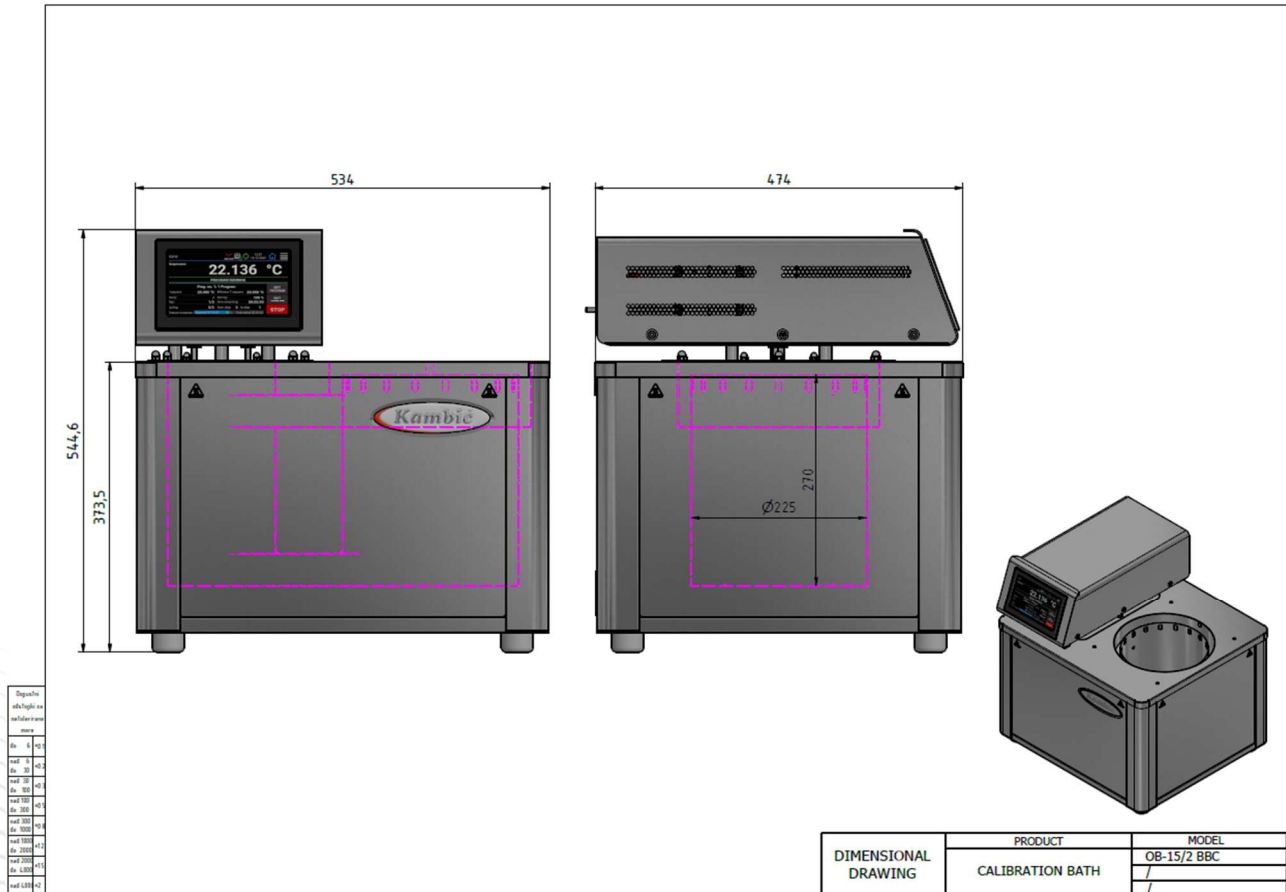


Ordering information and accessories:

| Description | Part no. |
|--|----------|
| Calibration bath OB-15/2 BBC | 1925 |
| Black Body cavity ASTM standard (vertical insertion flange) | 2975 |
| Black Body cavity JIS T standard (vertical insertion flange) | 2976 |
| Black Body cavity CEN EN standard (vertical insertion flange) | 2977 |
| Black Body cavity CN standard (vertical insertion flange) | 2978 |
| Black Body cavity EXERGEN standard (vertical insertion flange) | 2979 |
| Black Body cavity Combo (two bodies on one flange - vertical insertion) | / |
| Evaluation report – performed by Kambič | 1719 |
| Evaluation report (accredited ISO/IEC 17025:2017) | 1777 |
| External fluid level for LIG | 1655 |
| Vertical fixture | 1657 |
| Adjustable multiple probe fixture | 1733 |
| LIG (liquid in glass thermometer) fixture | 1735 |
| Local fume hood with fan | 1656 |
| Removable shelf | 1658 |
| Black body mounting flange cover (for operating without black body cavity) | 2118 |
| Extra lid for OB-15/2 | 2116 |
| Extra side insulation lid for OB-15/2 | 2117 |
| Silicone oil fluid KDC 200.50 (+ 30 °C ...+ 278 °C) | 631 |
| Silicone oil fluid KDC 200.05 (- 40 °C ...+ 130 °C) | 645 |

**Black Body Cavity is not included with the base unit. It has to be ordered separately!*

**Accessories might affect performance!*



Black-body cavity:

1. Blackbody opening
2. Reference sensor opening
3. Height-adjustable shelf for reference sensor
4. Blackbody cavity



* Black Body Cavity is not included with the base unit. It has to be ordered separately!