



ULTRA STABLE STANDARD RESISTOR MAINTENANCE BATH

(+ 5 °C ...+ 60 °C)

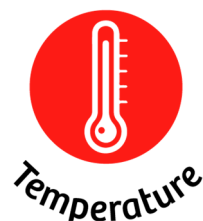
Model:

OB-60/2 LTUS

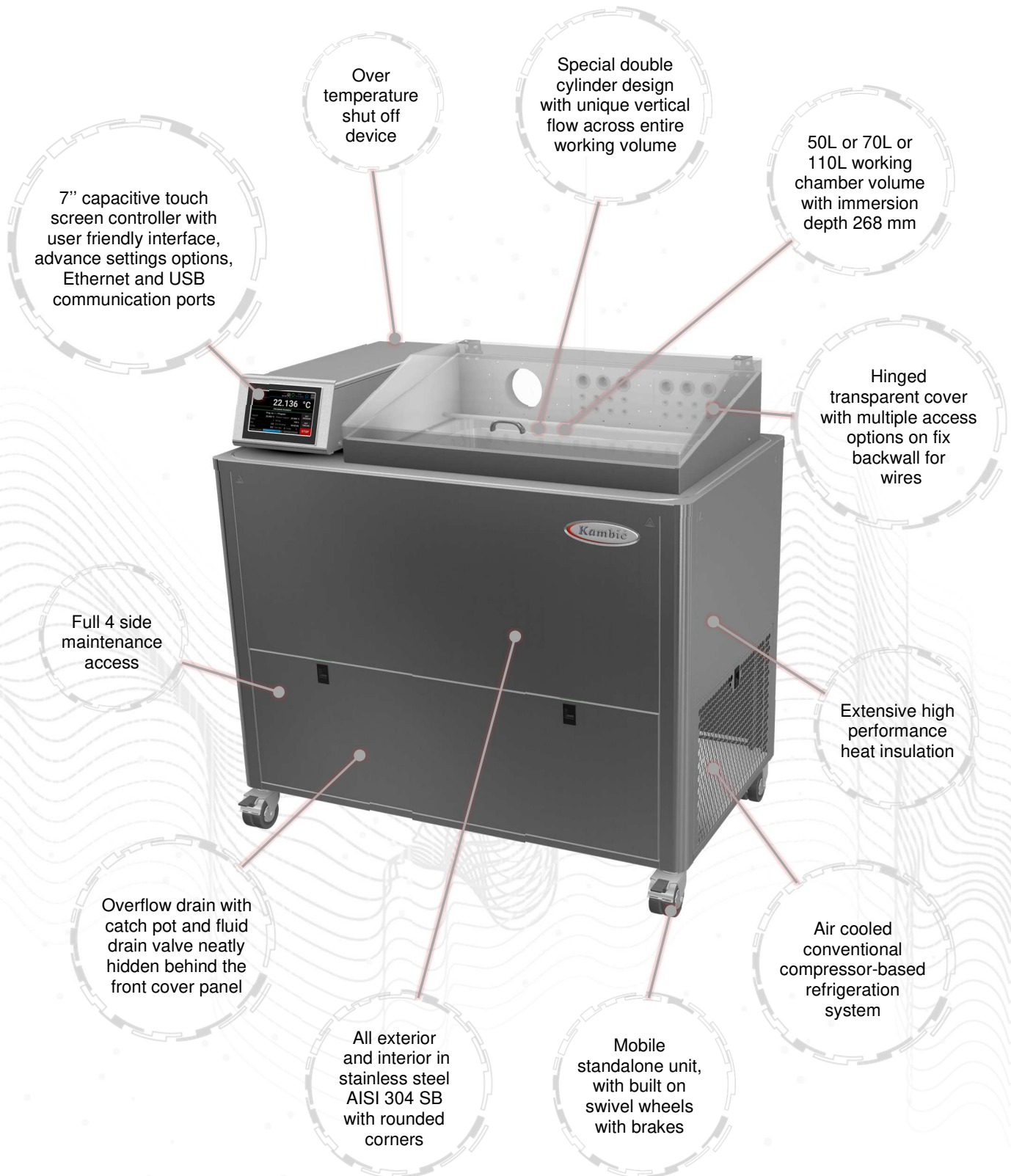
OB-100/2 LTUS

OB-110/2 LTUS

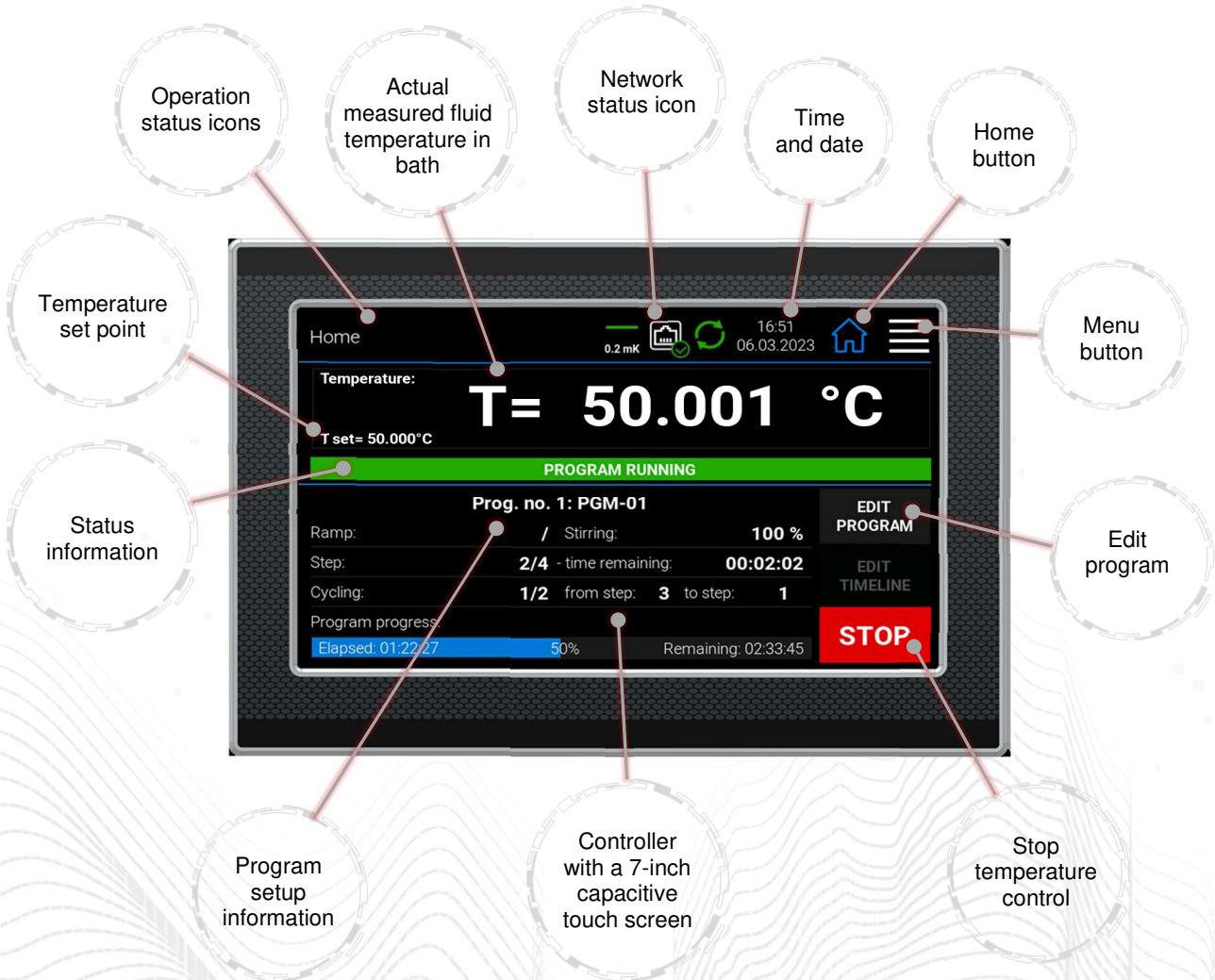
- Dedicated standard resistor maintenance baths with exceptional metrology performance
 - Uniformity and stability in mK range
 - Unique vertical flow design
 - Hinged transparent cover
 - State of the art solution
 - Multiple access ports
 - Three bath sizes



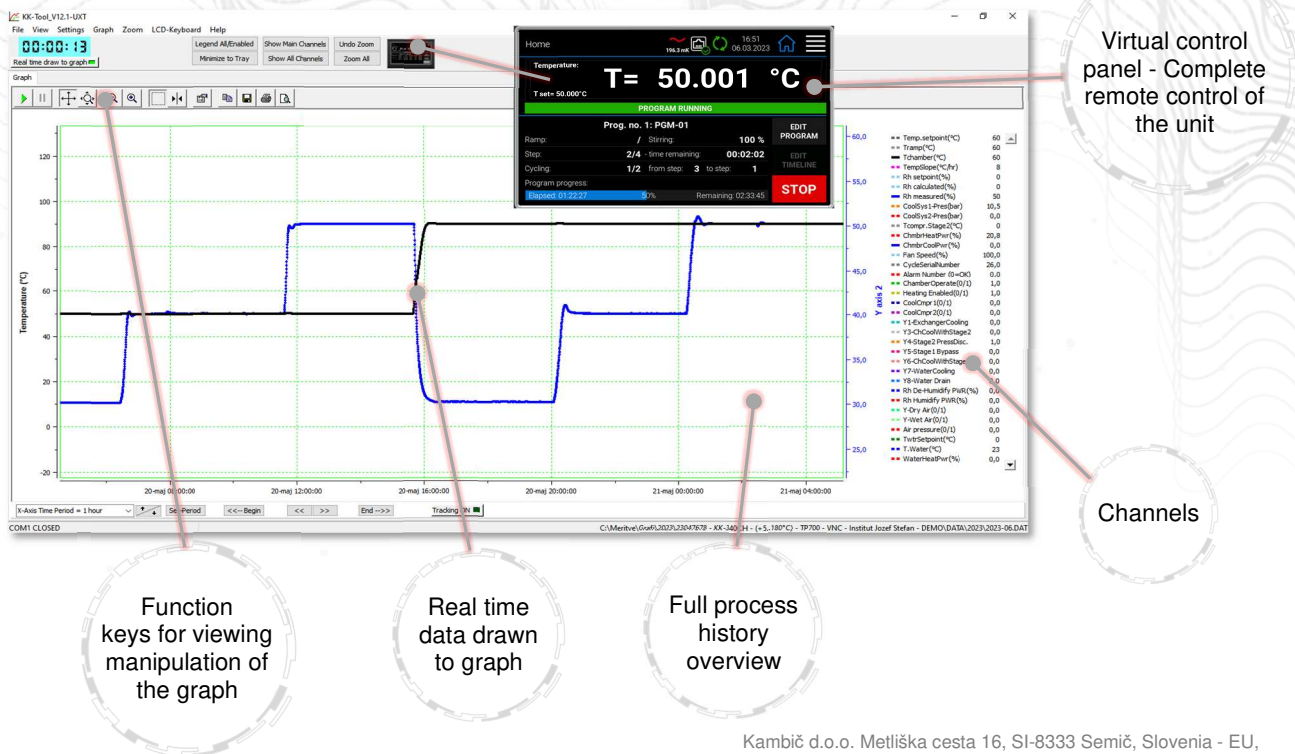
Device description:






Touch display with advanced controller functions:



OB-Tool software for PC (free – included with every unit):



Technical data:

	OB-60/2 LTUS	OB-100/2 LTUS	OB-110/2 LTUS
			
External dimensions (WxHxD) [mm]	1000 x 1070 x 550	1101 x 1070 x 651	1101 x 1134 x 751
Internal dimensions (diameter x immersion depth) [mm]	550 x 268 x 320	640 x 268 x 400	640 x 350 x 500
Volume [L]	~ 47	~ 68	~ 112
Fluid quantity for operation [L]	~ 78	~ 115	~ 155
Temperature range [°C]	+ 5 ...+ 60	+ 5 ...+ 60	+ 5 ...+ 60
Temperature display resolution [°C]	0.001	0.001	0.001
Temperature set resolution [°C]	0.001	0.001	0.001
Temperature stability [°C]	± 0.003 @ 23 °C	± 0.003 @ 23 °C	± 0.003 @ 23 °C
Temperature uniformity [°C]	< ± 0.007@ 23 °C	< ± 0.007@ 23 °C	< ± 0.007@ 23 °C
Heating rate	~ 260 min (+ 20 °C ...+ 5 °C)	~ 320 min (+ 20 °C ...+ 5 °C)	~ 450 min (+ 20 °C ...+ 5 °C)
Cooling rate	~ 120 min (+ 20 °C ...+ 60 °C)	~ 150 min (+ 20 °C ...+ 60 °C)	~ 245 min (+ 20 °C ...+ 60 °C)
Temperature Control	PID	PID	PID
Noise level [dBA]	< 58	< 58	< 58
Cooling	Compressor Cooling System	Compressor Cooling System	Compressor Cooling System
Power supply	230 V 50/60 HZ (± 10 %)	230 V 50/60 HZ (± 10 %)	230 V 50/60 HZ (± 10 %)
Wattage [W]	3200	3200	3200
Interface	Ethernet, USB	Ethernet, USB	Ethernet, USB
Weight [kg]	~ 110	~ 125	~ 155

**All performance data with fluid KDC 200.05*

**All performance in controlled environment (Tambient = 22 °C ± 3 °C)!*

**Accessories might affect performance!*

Accessories:

- Additional lid



- Vertical fixture



- Removable shelf



- Evaluation report



Ordering information and accessories:

Description	Part no.
Ultra stable standard resistor maintenance bath OB-60/2 LTUS	1644
Ultra stable standard resistor maintenance bath OB-100/2 LTUS	1643
Ultra stable standard resistor maintenance bath OB-110/2 LTUS	2944
Evaluation report – performed by Kambič	1719
Evaluation report (accredited ISO/IEC 17025:2017)	2997
Silicone oil fluid KDC 200.05 (- 40 °C ...+ 130 °C)	645
Vertical fixture	1657
Additional lid	/
Removable shelf	1658

**Accessories might affect performance!*

